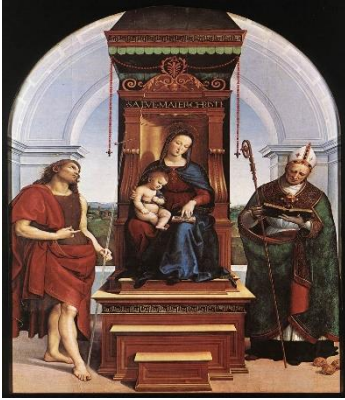


ΘΕΜΑ 1. ΚΑΤΑΝΟΗΣΗ ΓΡΑΠΤΟΥ ΛΟΓΟΥ

Read the text and choose the correct option (A, B or C) for items 1-10.



Raphael was born on March the 28th or April the 6th, 1483. His father, Giovanni Santi, was a competent painter and was highly appreciated in Urbino, a region that housed one of the most glittering courts in Italy. This provided the young Raffaello with quite a privileged upbringing within the culture of the Umbrian court. However, Raphael's mother dies in 1491 when he is eight years old. His father, Giovanni, dies three years later when he is still only eleven. Before his death, Giovanni manages to place his son as a trainee in the art studio of Pietro Perugino. Although Raphael very quickly escaped from the painting style of his trainer, he followed Perugino's method of constructing paintings all of his life. Raphael's move to Florence in 1504 was stimulated by his strong wish to learn more from the recognized great representatives of Florentine art. Leonardo da Vinci was at the peak of his fame and had returned to the city from Milan in 1500. Raphael copied figures by Leonardo and Michelangelo who had both studied the anatomy of the human body. In Florence, Raphael also completed three large pieces for inner church parts, *The Ansidei Madonna*, *The Baglioni altarpiece*, both commissioned by Perugian clients, and *The Madonna del Baldacchino* for a chapel in Santo Spirito, a Florentine church. One of his final paintings of the Florentine period is the magnificent *Saint Catherine* now in the National Gallery in London. Raphael was able to continue with his own developing style whilst absorbing the influences of Florentine art. At the age of 25, he found a patron, Pope Julius II, and was given the task of decorating rooms in the Pope's private apartments. *The Stanza* also known as the Raphael Rooms, are located on the upper floor of the Vatican Palace.

(Words: 300)

1. This kind of text can be found on a website about
A. decorations. B. religion. C. arts.
2. This text is addressed to
A. architects. B. the general public. C. sculptors.
3. Raphael was raised in an environment in which the arts
A. were valued. B. did not exist. C. were not appreciated.
4. According to the text, Raphael's father
A. trained his son in painting figures on canvas. B. enrolled his son as an apprentice in an art studio. C. discouraged his son from becoming an artist.
5. According to the text, Raphael moved to Florence to
A. gain knowledge from the works of renowned Florentine artists. B. help Da Vinci complete the portrait of Mona Lisa. C. study the anatomy of the human body.
6. The text suggests that Raphael's paintings are on display
A. only in Milan. B. only in Florence. C. in England too.
7. According to the text, Raphael
A. gradually developed his own painting style. B. copied existing Florentine art in all of his works. C. painted works only in churches.
8. According to the text, Pope Julius II asked Raphael to decorate
A. the entire Vatican Palace. B. parts of the Vatican Palace. C. a chapel in Santo Spirito.
9. In the text, the underlined word 'stimulated' means
A. encouraged. B. abandoned. C. discouraged.
10. In the text, the underlined word 'absorbing' means
A. rejecting. B. accepting. C. multiplying.

ΘΕΜΑ 2^ο. ΛΕΞΙΚΟΓΡΑΜΜΑΤΙΚΗ

Use the correct form of the following words (A-K) to complete the gaps (11-20) as in the example.

A.	art	B.	influences	C.	located	D.	decorating	E.	years
F.	able	G.	developing	H.	private	I.	constructing	J.	learn
K.	young								

EXAMPLE	In Oscar Wilde's novel "The Picture of Dorian Gray", the hero exchanges his soul for eternal <u>YOUTH</u> . According to Dorian's wish his portrait ages but he does not.
11.	He went on to invent a variety of products for _____ people, including eating and drinking aids and wheelchair gadgets.
12.	Every December the company holds a(n) _____ event to celebrate its employees' achievements.
13.	The cottage is situated in a lovely _____ nearby the sea. It is the perfect place to relax and feel close to nature.
14.	Both her children are very _____. Her son is extremely talented in drawing and her daughter in singing.
15.	The documentary traced the _____ of popular music through the ages, highlighting its cultural significance and the transformative impact it has had on various societies.
16.	Our website is currently under _____, as we are working diligently to enhance its features and offer our customers an improved browsing experience.
17.	Although she was not a professional politician, her views were _____ in shaping government policy.
18.	Famous people often find that their _____ is invaded by the press, leading to challenges in maintaining a sense of normality and personal space in their everyday life.
19.	Her older brother patiently guided her as she practiced parking, helping her to gradually build her confidence as she was still a _____ driver.
20.	The neighbourhood came alive with sparkling lights and hand-crafted Christmas _____, transforming it into a magical winter wonderland.